

Seniors and COVID-19

Vision

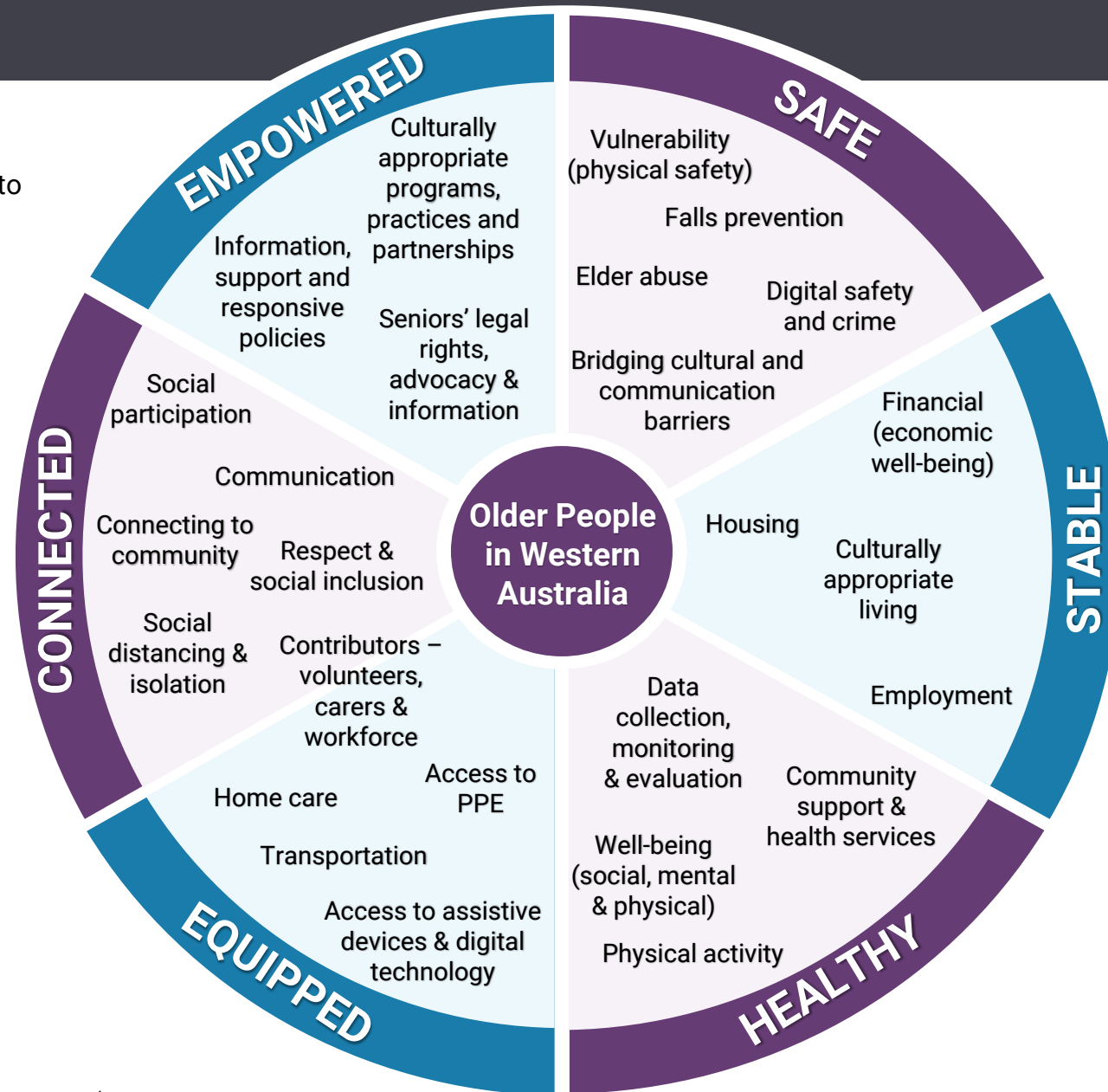
Western Australian seniors have access to information and supports that promote healthy and positive ageing.

Vulnerability of older people

- Older people who may be more vulnerable during the COVID-19 pandemic include people: who identify as Aboriginal and Torres Strait Islander; who are from culturally and linguistically diverse backgrounds; who are LGBTIQ+; with a disability or mental health concern; live in rural or remote areas; are older and single; are homeless or at risk of homelessness; are grandcarers; have spent time in foster care or other care settings.

Elder Abuse statistics

- It is estimated that between 2 and 14 per cent of older Western Australians experience, or have experienced some form of elder abuse.



Purpose

To identify emerging issues due to COVID-19 and the recovery responses

COVID-19 WA statistics

- Confirmed cases of COVID-19 by age & gender:
 - 60-69 years
 - Male: 55 ; Female: 66
 - 70-79 years
 - Male: 56 ; Female: 47
 - 80 years +
 - Male: 8 ; Female: 5
- Total deaths in WA: 9

experience.arcgis.com/experience/359bca83a1264e3fb8d3b6f0a028d768 (as at 27/07/2020)

