



Tuesdays at Twelve

Interactive webinar series
with the DG and guests

Waiting for event to start





Agenda

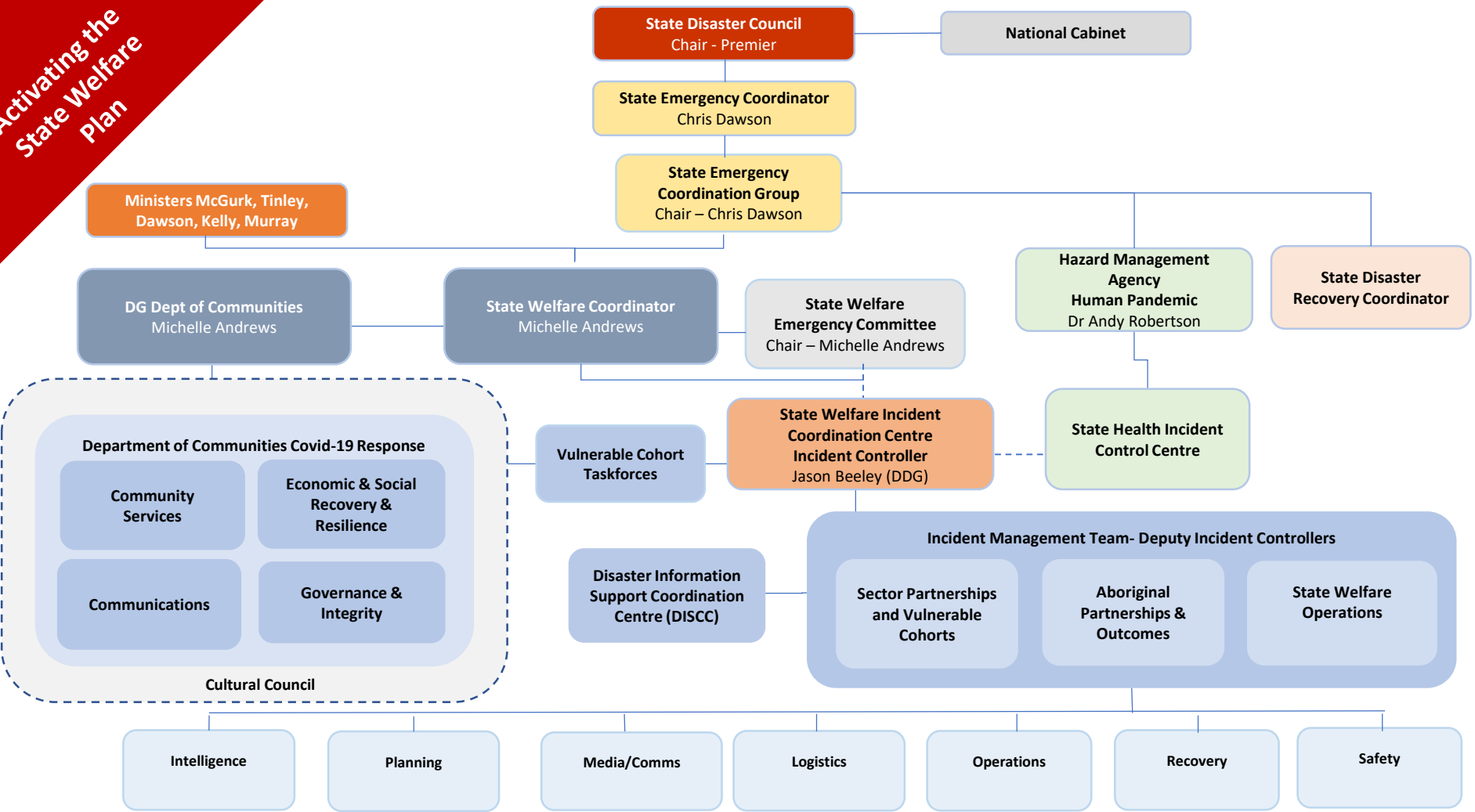
1. Welcome & introductions
2. Activation of State Emergency Welfare Plan (Michelle Andrews)
3. Update on Covid-19 response
 - Deborah Zanella
 - Jennifer McGrath
4. Q & A

Who we are



- Michelle Andrews – Director General Department of Communities
- Deborah Zanella – President WACOSS
- Jennifer McGrath – Commissioner Mental Health Commission

Activating the State Welfare Plan



**State Welfare
Emergency Committee***
Chair – Michelle Andrews

State Welfare Coordinator
Michelle Andrews
DG Communities

**Hazard Management Agency
Human Pandemic**
Dr Andy Robertson

**State Disaster Recovery
Coordinator**

**Vulnerable Cohort
Taskforces**

**State Welfare Incident Coordination
Centre**
Incident Controller
Jason Beeley (DDG)

**State Health Incident
Control Centre**

**Disaster Information
Support Coordination
Centre (DISCC)**

Incident Management Team- Deputy Incident Controllers

- Sector Partnerships
and Vulnerable
Cohorts**
- Aboriginal
Partnerships &
Outcomes**
- State Welfare
Operations**

**Functional
Streams**

- State Welfare
Operations**
- Aboriginal
Partnerships &
Outcomes**
- Sector
Partnerships
and Vulnerable
Cohorts**

Intelligence

- Welfare
Register**
- Demand
Modelling**

Planning

- Strategy &
Emerging Risk**
- Operations
Planning**
- Recovery
Planning**
- Liaison &
Stakeholder
Engagement**

Media/Comms

- Media**
- Communications
- Internal**
- Communications
- External**
- Ministerial**

Logistics

- Facilities and
Accommodation**
- IT**
- Procurement/Asset
s**
- Supply Chain -
Food
& Provisions**

Operations

- Operations
Delivery**
- Arrivals &
Departures
In Care/In Home**
- Vulnerable Groups
& Aboriginal Eng.**
- Regional and
Remote
Communities**

Recovery

- Social**
- Built**
- Environmental**
- Economic**

Safety

- HR**
- OSH**
- PPE**

What are our responsibilities?



- Communities is the State agency responsible for coordinating emergency welfare support to people under the State Emergency Welfare Plan working alongside the Hazard Management Agency for Human Biosecurity (Health), and reporting to the State Emergency Coordinator.
- Welfare services include:
 - emergency accommodation;
 - emergency food provision;
 - emergency clothing and personal requisites;
 - personal support services;
 - registration and reunification; and
 - financial assistance.
- Communities can provide support and make special arrangements for any vulnerable groups within the community whose circumstances do not allow them to react to an emergency.
- The plan needs updating and to be implemented in the context of a global pandemic rather than a much smaller shorter localised emergency like a bushfire.



Tuesdays at Twelve Question Time



Thank you and please join us
next Tuesday at twelve